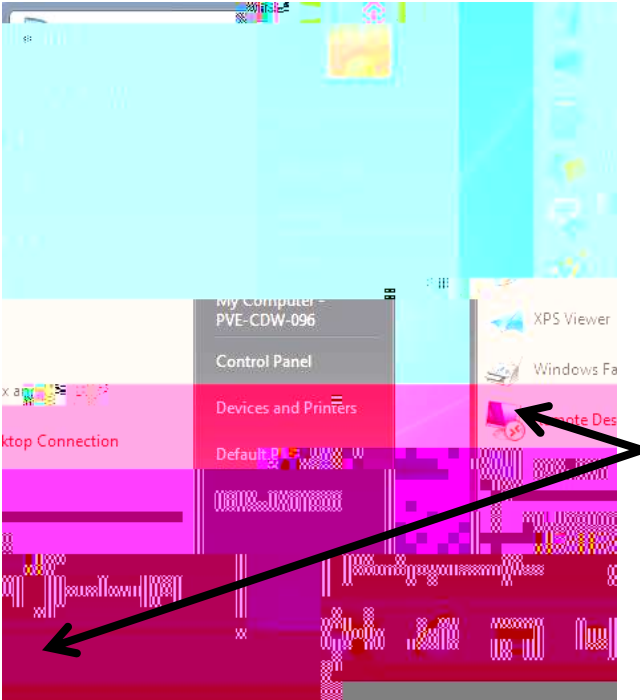


Adding a Network Printer on Windows 7

To Add a Network printer on Window 10- See Page 5

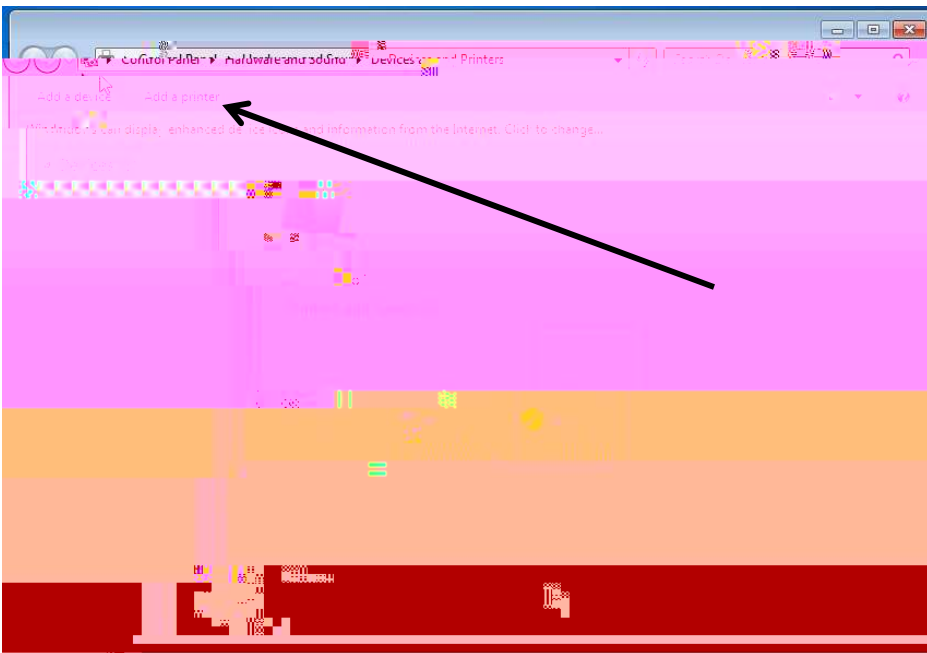


log into the computer

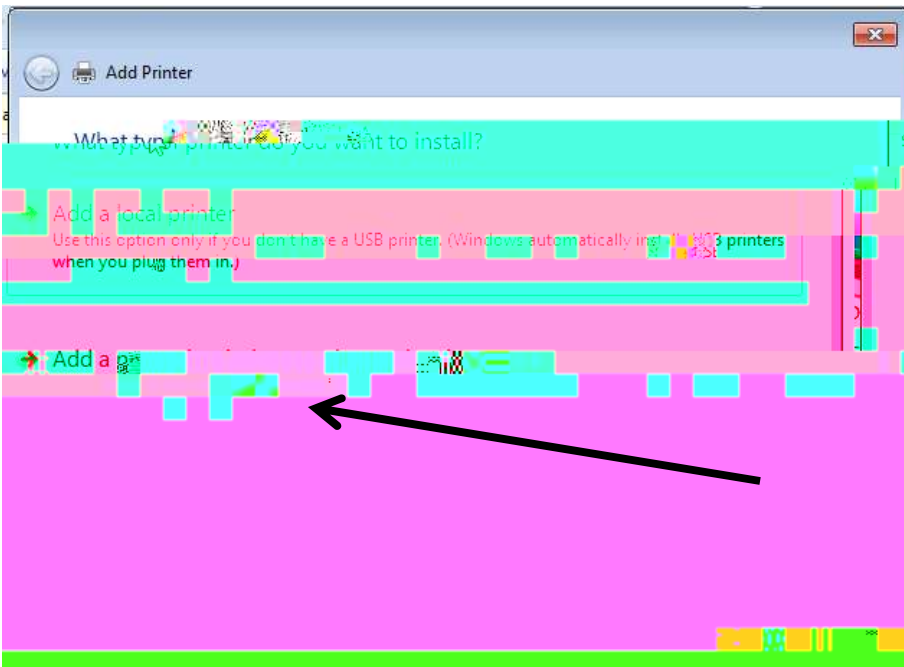
START

CONTROL

DEVICES AND PRINTERS

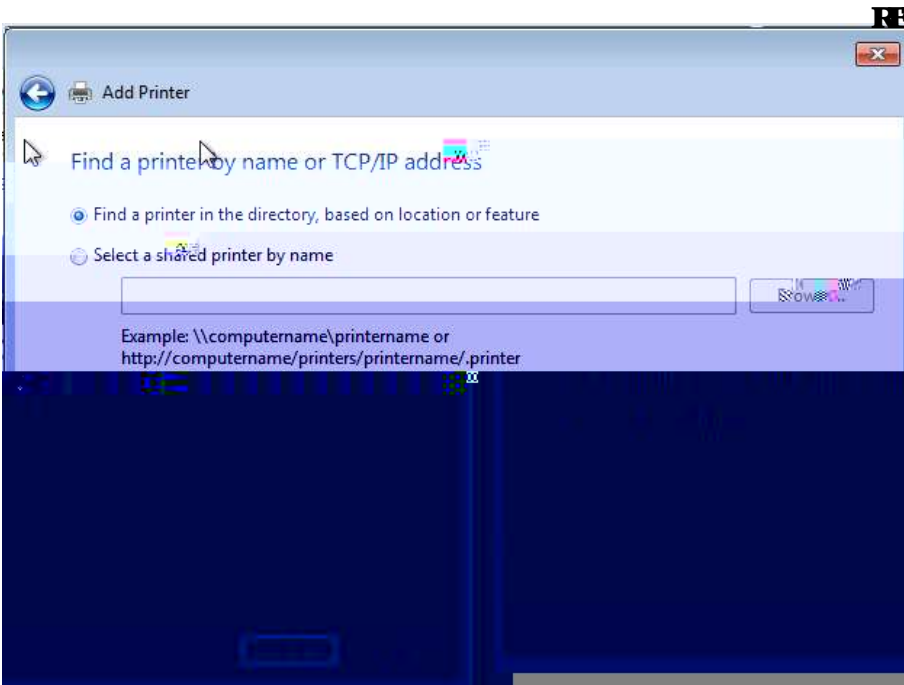


ADD A PRINTER



**ADD A NETWORK, WIRELESS OR
BLUETOOTH PRINTER**

NEXT

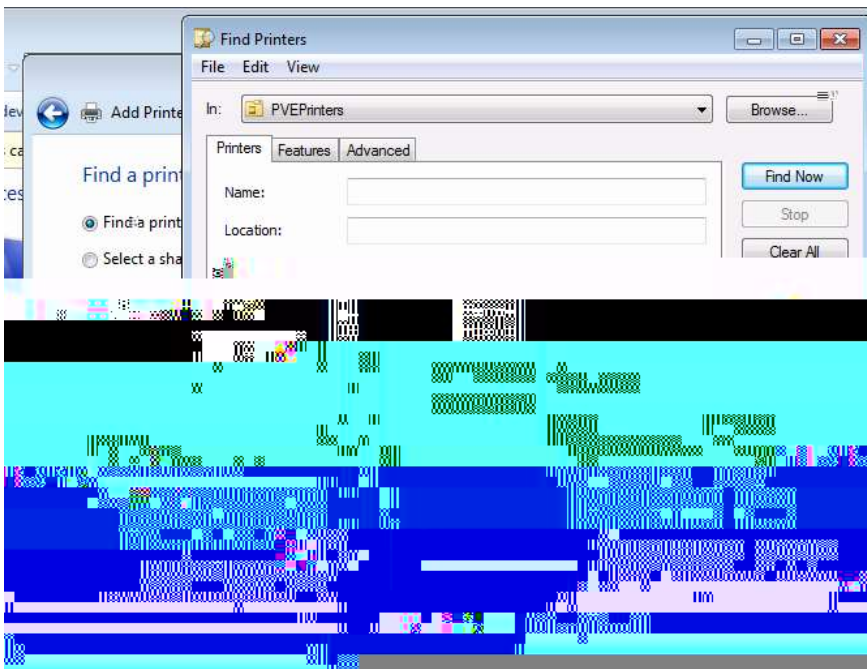


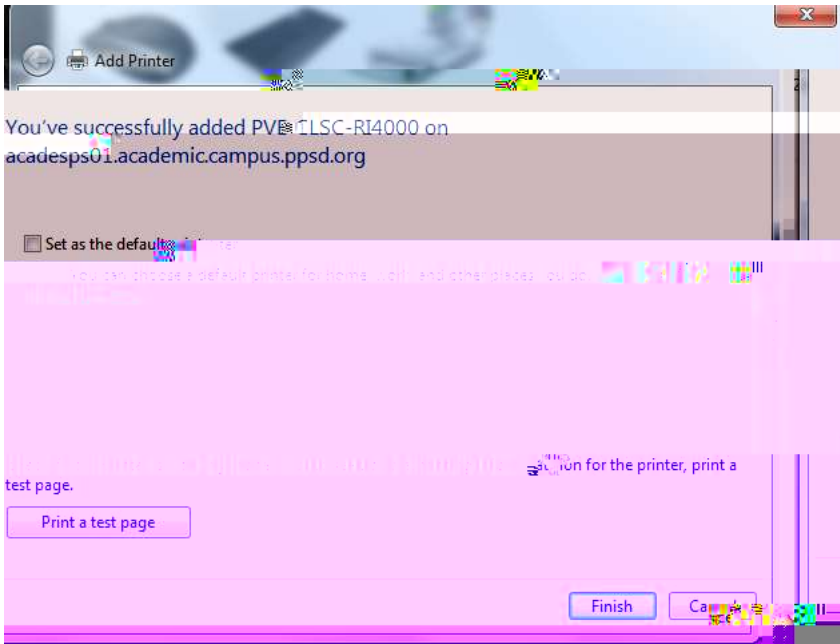
RET

T

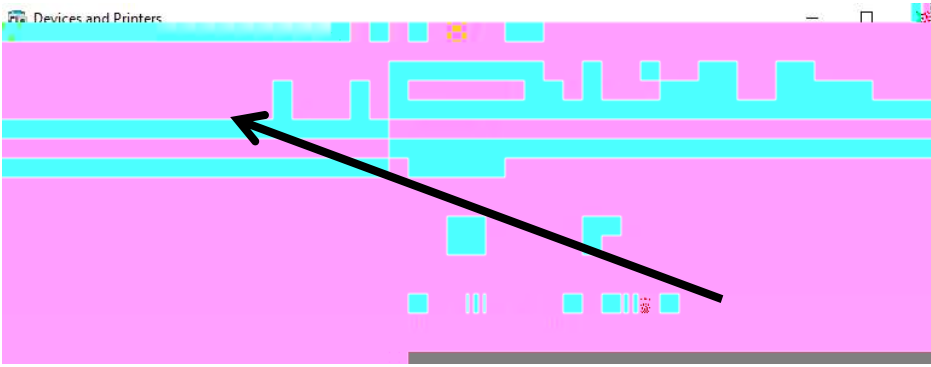
BT

ENDNOW

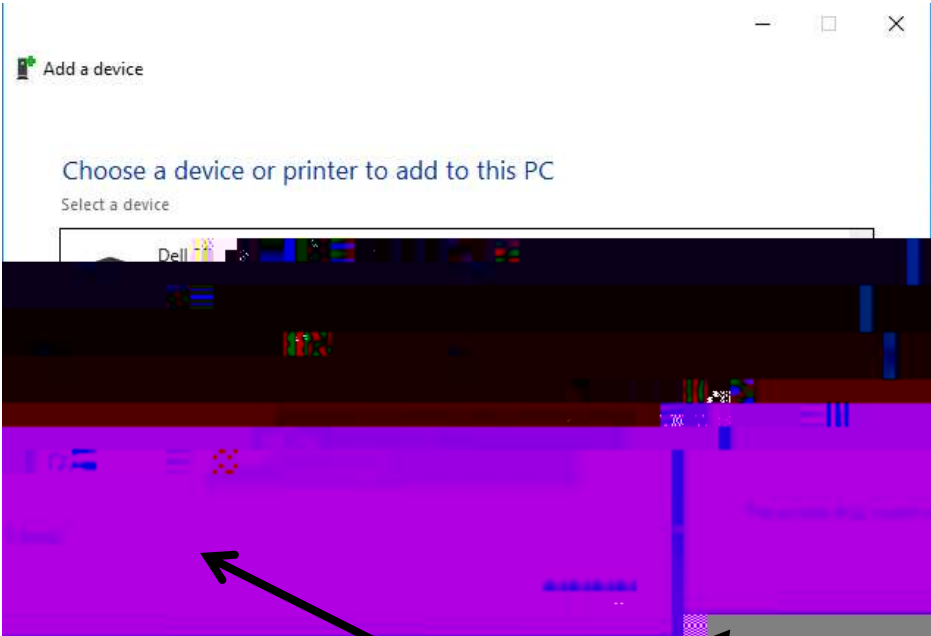




**YES
DEAULTNER**



ADD A PRINTER



**THE PRINTER I WANT
IS THIS**

NEXT



← Add Printer

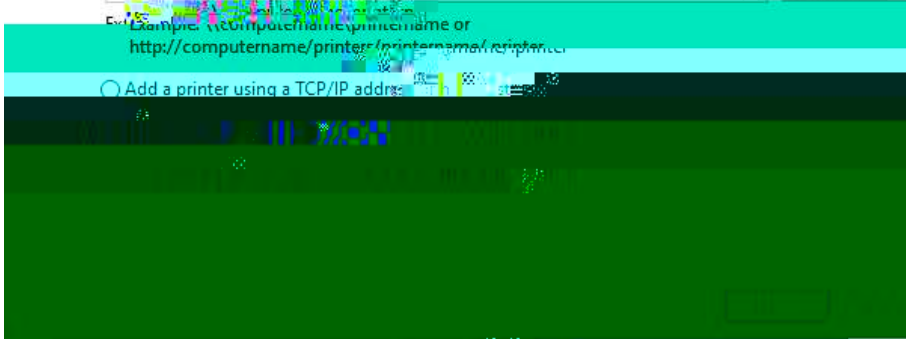
Find a printer by other options

- My printer is a little older. Help me find it.
- Find a printer in the directory, based on location or feature
- Select a shared printer by name

Browse...

For example, \\computername\printername or
http://computername/printer/printername/scriptname

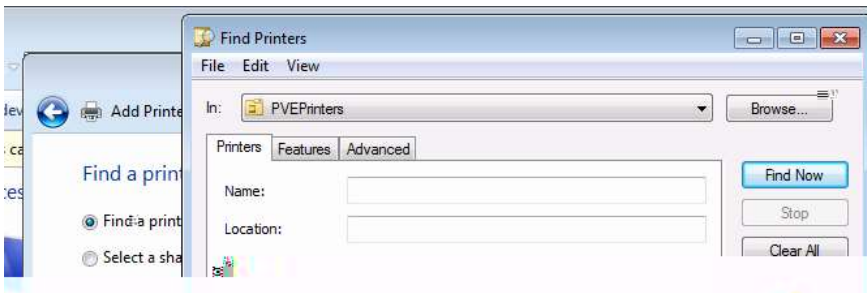
Add a printer using a TCP/IP address



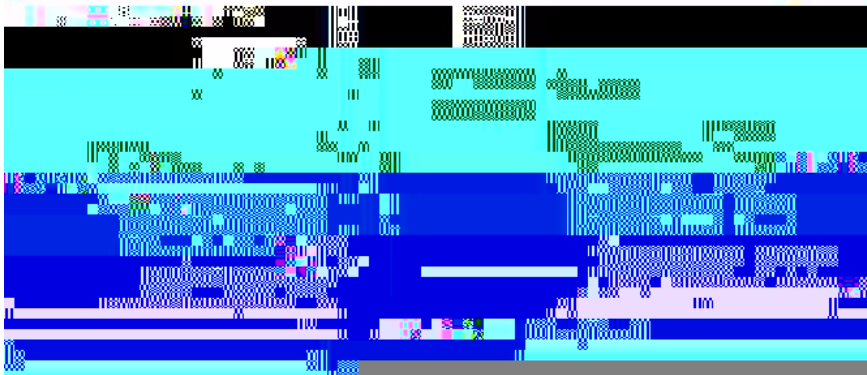
END

PRINTERTHEDIRECTORY

NEXT



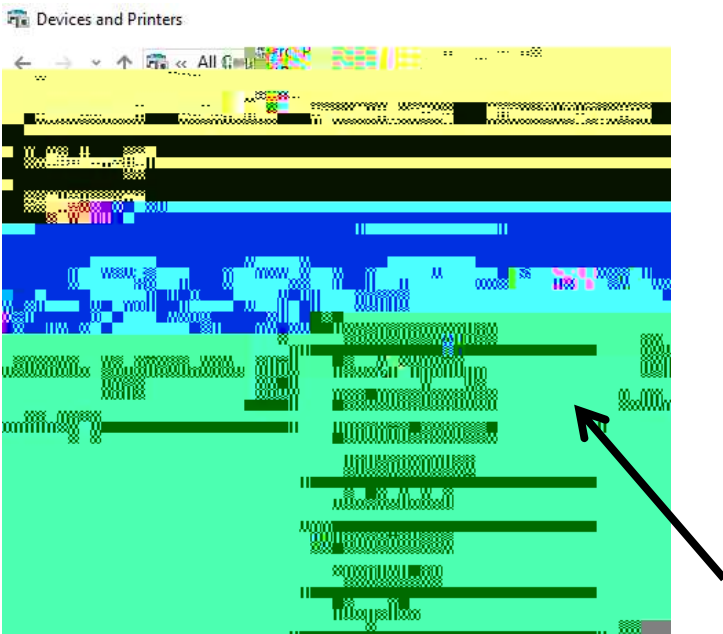
ENDNOW



**DOUBLECLICKonthePRINTERTO
ADD**



BNSH



SETASDEFAULTPRINTER

Congratulations!